

WiFi-Relay

WiFi to RF Converter

The WiFi-Relay controller converts WiFi signal to RF signal, also know as WiFi gateway or Wi fihub. it is compatible with multiple type of Skydance receivers. With WiFi-relay, you could control single color, dual color, RGB, RGBW, RGB+CCT LED lights by smart phone.

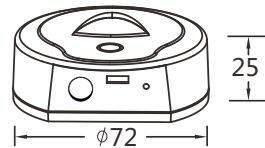
Features

- Can mix load all Skydance RF 2.4G LED controllers, LED dimmable driver and smart lamp.
- Can realize dimming, color temperature, RGB, RGBW, RGB+CCT light effects.
- Load 1-16 zones, 8 scene memory.
- Including one micro USB cable.
- Android / IOS software name: SkySmart.

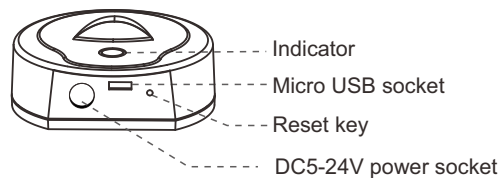
Technical Parameters

- Inputvoltage : DC5-24V
- Operation frequency: 2.4G
- Remote distance: 30m
- Working temperature: -30°C~55°C
- Product size: $\Phi 72 \times 25$ mm

Dimension



Interface Specification



Load all Skydance RF 2.4G wireless series products, including LED controllers, LED dimmable driver and LED lights, and load Skydance RF 2.4G 0-10V dimmer and RF 2.4G Triac dimmer



Software installation

1. Download application from 'app store' or 'google play' by searching 'SkySmart' .
2. If the WiFi-Relay controller has connected with router, then connect your smart phone to your router network.
If the WiFi-Relay controller did not connect with router, then connect your smart phone to the WiFi-Relay controller network directly.
3. Open the SkySmart application and operate according below instructions.



WiFi controller connection

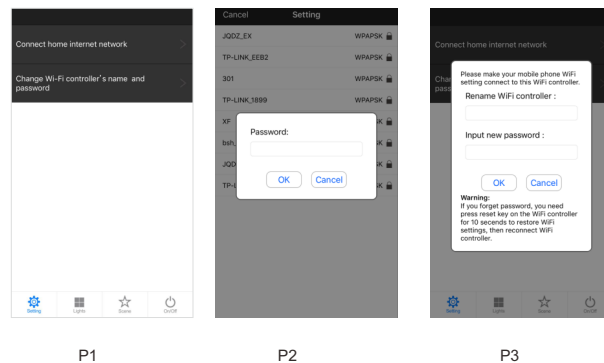
1. Connect WiFi controller to your home network (Recommend for daily use)
 - 1) Enter mobile device's WiFi setting, search and connect WiFi controller(Skysmartlight).
 - 2) Open SkySmart App and choose 'Settings'.(P1)
 - 3) Choose 'Connect home internetnetwork'.
 - 4) Press OK, it will search all the router around automatically.
 - 5) Choose router we want connect, enter pass word then press OK.(P2)

- If the router was changed or lost, and Skysmartlight network can not be searched in network list, you can long press reset key for 10s to restore factory settings, then repeat above steps again.

2. Direct connect Smart phone to WiFi controller (for edit this WiFi controller's name and password) When WiFi signal is not available, you could use this direct connection mode control your LED lights.

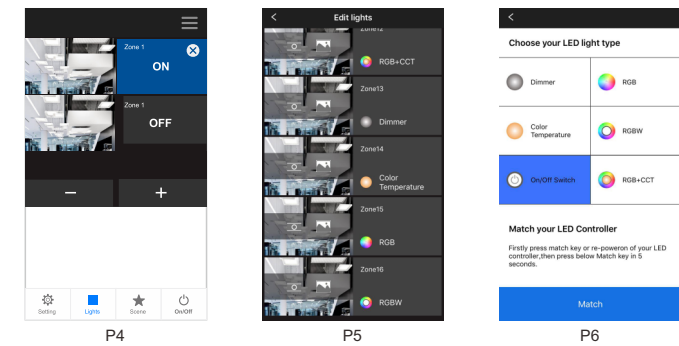
- 1) Enter mobile device's WiFi setting, search and connect to this WiFi controller(Skysmartlight).
- 2) Start use Skysmart App.

- WiFi controller's name and password could be edit only under this direct connection mode. Choose 'Settings', then Choose 'Change WiFi-controller's name and password', input new name or password, press OK.(P3)
- If you forget password, you have to restore factory settings (long press reset key for 10 seconds).



Add, edit or delete light zone and match receivers

- 1) Choose 'Lights', then click below + or - key to add new light zone or delete light zone.(P4)
- 2) Click right-top key to edit all light zone.(P5)
- 3) Click light zone name to edit light zone name.
- 3) Click picture or camera icon to change light zone picture.
- 4) Click light type icon to change light type, there are 6 kinds light type you can select: Dimmer, Color temperature,RGB,RGBW,RGB+CCT or On/off Switch. When light type is changed, firstly press match key or re-poweron of your LED controller, then click below blue Match key.(P6)

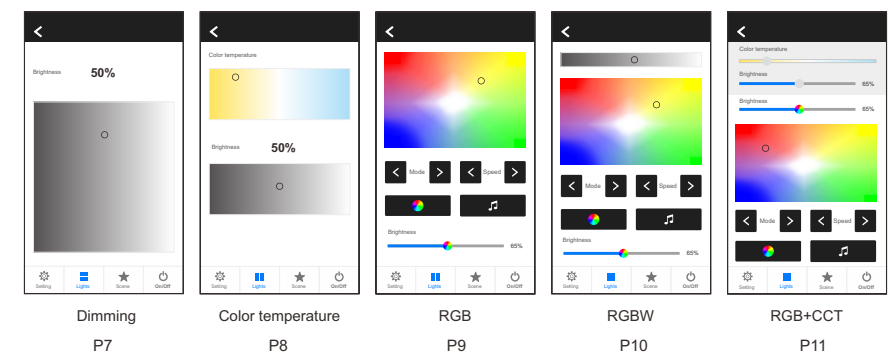


- 5) The second way to match light zone with receivers: choose 'Lights', firstly press match key of your LED controller, then click right ON/OFF key, the match is done once the LED indicator flash several times fastly. or firstly re-poweron of your LED controller, then click right ON/OFF key three times fastly, the match is done once the light blinks 3 times.

Light operation

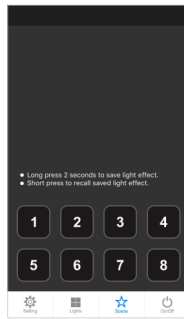
Enter lights interface,

- 1) Click right ON/OFF key to turn on or turn off each zone light,
- 2) Click bottom-right On/Off key to turn on or turn off all zone light,
- 3) Click left picture to enter each zone's light interface.(P7-P11)

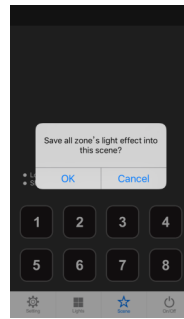


Scene operation

1. Save : 1) Enter lights interface, change each light zone's color or on/off state.
2) Enter scene interface, long press any of 8 digital key, save the current light effect into 1-8.(P13)
2. Recall : Enter scene interface, short press any of 8 digital key, recall saved light effect.(P12)



P12



P13

Warranty Agreement

1. 5-year warranty:
 - The warranty is for free repair or replacement and covers manufacturing faults only.
 - Do not include fees of on site maintenance and consumable parts.
2. Limited Warranty
 - Artificial damage caused by improper use, such as use inappropriate power supply, improper accessories, improper installation, did not follow the instructions, error using or negligence.
 - Any damages caused by force majeure, such as natural disaster, abnormal voltage.
 - The normal use of products caused by aging, wear and tear, but it does not affect the normal use.

Safety information

1. The product shall be installed and serviced by a qualified person.
2. This product is non-waterproof. Please avoid the sun and rain.
3. Good heat dissipation will prolong the working life of the controller, please ensure good ventilation.
4. Please check if the output voltage of any power supplies used comply with the working voltage of the product.
5. Ensure all wire connections and polarities are correct and secure before applying power to avoid any damages to the LED lights.
6. If a fault occurs please return the product to your supplier. Do not attempt to fix this product by yourself.