

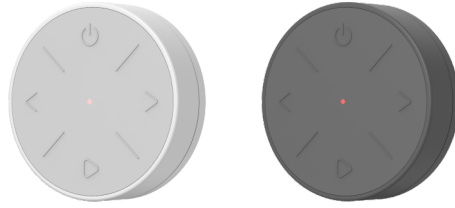
# RQ4

## 4-Button RF Remote Controller

DIM/CCT/RGB/RGBW/RGB+CCT

### Features

- 5-in-1 four-button remote control, support 1-5 color LED control, suitable for single color, color temperature, RGB, RGBW or RGB+CCT LED controller.
- Turn the light on/off, adjust the brightness, color temperature, and RGB color by pressing the buttons.
- Operate with LED indicator light.
- CR2032 battery powered.
- Black & Grey-white available.

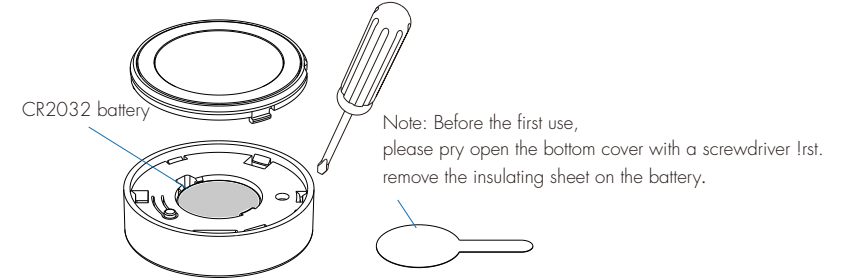
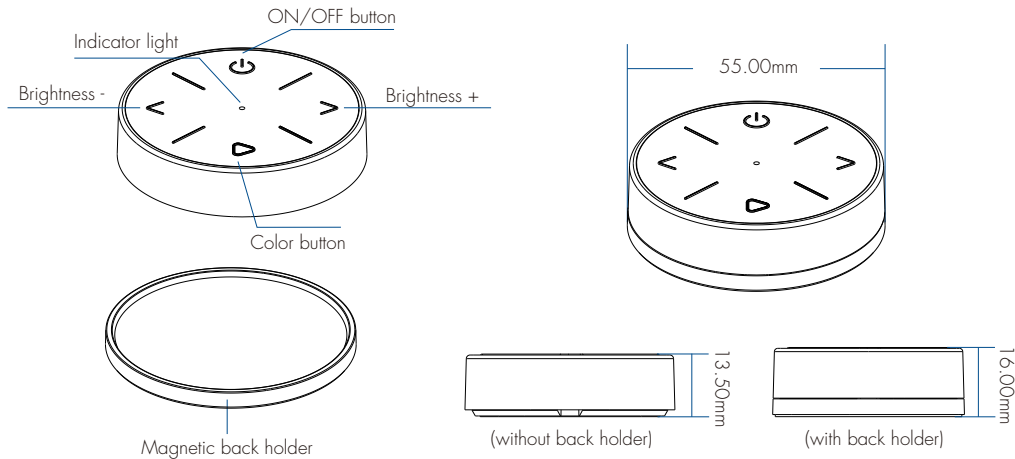


CE RoHS

### Technical Parameters

Input and Output		Environment		Safety and EMC	
Output signal	RF 2.4GHz	Operation temperature	Ta: -10°C ~ +55°C	EMC standard	EN IEC 55015/ EN IEC 61547-1/-2 ETSI EN 301 489-1/-17
Work voltage	3VDC(CR2032)	IP rating	IP20	Safety standard	EN 61347-1/-2
Work current	<8mA	<b>Package</b>		Radio equipment	ETSI EN 300 440 ETSI EN 300 328
Standby current	<10µA	Size	L 60 x W60 x H32mm	Certification	CE RoHS
Control distance	30m(Barrier free space)	Gross weight	0.055kg		
<b>Warranty</b>					
Warranty	5 years				

### Mechanical Structures and Installations



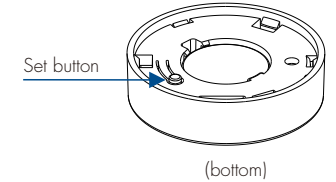
There are two ways to fix the remote control:

- 1: The remote control can be attached directly to metal surfaces.
- 2: Secure the remote control back holder to the wall with 3M adhesive.

### Light Type Setting

Long press set button 2s to switch 5 light types in sequence.

1. When set to DIM light type, the LED indicator light flash 1 time.
2. When set to CCT light type, the LED indicator light flash 2 times.
3. When set to RGB light type, the LED indicator light flash 3 times.
4. When set to RGBW light type, the LED indicator light flash 4 times.
5. When set to RGB+CCT light type, the LED indicator light flash 5 times.



The factory default light type is DIM.

When the battery of the remote control is replaced and the power is restored, the indicator light will flash the corresponding number of times according to the current light type.

### Match Remote Control

End user can choose the suitable match/delete ways. Two options are offered for selection:

#### Use the controller's Match key

**Match:**  
Short press match key of the controller, immediately short press the ON/OFF button on the remote controller. The LED indicator fast flash a few times means match is successful.

**Delete:**  
Press and hold match key of the controller for 5s to delete all match. The LED indicator fast flash a few times means all match were deleted.




#### Use Power Restart

**Match:**  
Switch off the power of the controller, then switch on power, repeat again. Immediately short press the ON/OFF button on the remote controller 3 times. The light blinks 3 times means match is successful.




**Delete:**  
Switch off the power of the controller, then switch on power, repeat again. Immediately short press the ON/OFF button on the remote controller 5 times. The light blinks 5 times means all matched remotes was deleted.

## Button Function




### DIM light type

-  Turn on/off the light.
-  Sequential switching of 5 levels of brightness (10%, 25%, 50%, 75%, 100%).
-  Adjust brightness, short press for 10 levels, long press to decrease/increase brightness continuously.




### CCT light type

-  Turn on/off the light.
-  Sequential switching 5 levels color temperature (warm white - neutral white - cool white).
-  Adjust brightness, short press for 10 levels, long press to decrease/increase brightness continuously.




### RGB light type

-  Turn on/off the light.
-  Short press: Switch between static color light (RGB) and mixed white light (current color light + 50% saturation) at the same time, enter the state of long press to adjust color light or saturation.  
Double click: Switch multiple dynamic change modes in sequence.  
Long press: In the static color light mode, adjust the color continuously .  
In the static mixed white light mode, adjust saturation continuously.
-  In the static mode, adjust the brightness.  
Short press for 10 levels, long press to decrease/increase brightness continuously.  
In the dynamic mode, adjust the speed.  
Short press for 10 levels, long press for 2 seconds to get the slowest/fastest speed.

### RGBW light type

-  Turn on/off the light.
-  Short press: Switch between the static color light (RGB) and white light (W), at the same time, enter the state of long press to adjust color light or white light brightness.  
Double click: Switch multiple dynamic change modes in sequence.  
Long press: In the static color light mode, adjust the color continuously.  
In the static white light mode, adjust the white brightness continuously.
-  In the static mode, adjust the brightness.  
Short press for 10 levels, long press to decrease/increase brightness continuously.  
In the dynamic mode, adjust the speed.  
Short press for 10 levels, long press for 2 seconds to get the slowest/fastest speed.

### RGB+CCT light type

-  Turn on/off the light.
-  Short press: Switch between the static color light (RGB) and color temperature. at the same time, enter the state of long press to adjust color light or color temperature.  
Double click: Switch multiple dynamic change modes in sequence.  
Long press: In the static color light mode, adjust the color continuously.  
In the static color temperature light mode, adjust the color temperature continuously.
-  In the static mode, adjust the brightness.  
Short press for 10 levels, long press to decrease/increase brightness continuously.  
In the dynamic mode, adjust the speed.  
Short press for 10 levels, long press for 2 seconds to get the slowest/fastest speed.

## Safety Information

1. Read all instructions carefully before you begin this installation.
2. When installing battery, pay attention to the battery positive and negative polarity.  
A long time without the remote control, remove the battery.  
When remote distance becomes smaller and insensitive, replace the battery.
3. If no response from the receiver, please re-match the remote.
4. Gently handle remote, beware of falling.
5. For indoor and dry location use only.
6. Remove and immediately recycle or dispose of used batteries according to local regulations and keep away from children.  
Do NOT dispose of batteries in household trash or incinerate.
7. Even used batteries may cause severe injury or death.
8. Call a local poison control center for treatment information.
9. Compatible battery type is CR2032 and the nominal battery voltage is 3V.
10. Non-rechargeable batteries are not to be recharged.
11. Do not force discharge, recharge, disassemble, heat above 55°C or incinerate.  
Doing so may result in injury due to venting, leakage or explosion resulting in chemical burns.
12. Ensure the batteries are installed correctly according to polarity (+ and -).
13. Do not mix old and new batteries, different brands or types of batteries, such as alkaline, carbon-zinc, or rechargeable batteries.
14. Remove and immediately recycle or dispose of batteries from equipment not used for an extended period of time according to local regulations.
15. Always completely secure the battery compartment. If the battery compartment does not close securely, stop using the product, remove the batteries, and keep them away from children.