

T20, T20-1, T20-2, T20-3

Wall Mounted Touch Panel



T20-1
1 Zone switch



T20-2
2 Zone switch



T20-3
3 Zone switch



T20
4 Zone switch

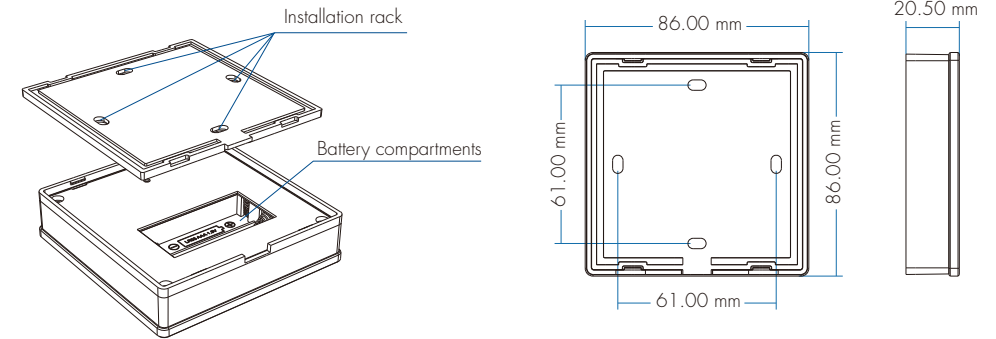
CE RoHS UKCA

Features

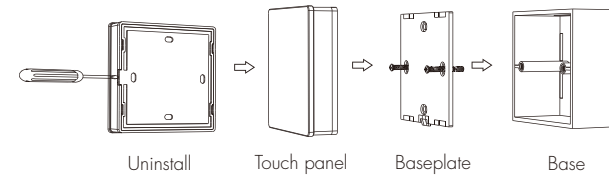
- Touch panel 1/2/3/4 zone dimming switch RF remote.
- Each zone can remote control multiple RF 2.4G LED controllers.
- Ultra sensitive high strength glass touch panel.
- Touch keys with chord tones and LED indicator.
- Free installation, no wiring, removable.
- AAA x 2 battery powered.
- White & Black glass panel available.

Technical Parameters

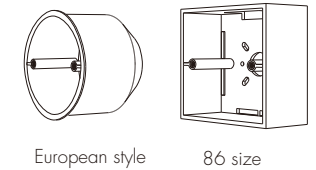
Input and Output	Environment	Safety and EMC
Output signal	RF(2.4GHz)	Operation temperature Ta: -30°C ~ +55°C
Working voltage	3VDC(AAA x 2)	Case temperature (Max.) Tc: +65°C
Working current	<5mA(Without tune) <20mA(with tune)	IP rating IP20
Standby current	<20μA	Package
Standby time	1 year	Size L100xW88xH30mm
Remote distance	30m (Barrier-free space)	Gross weight 0.19kg
		Warranty 5 years



Installation diagram:



Typical base as below:



To fix the panel, two options are offered for selection:

- Option 1: fix it on the wall with two screws.
Option 2: adhere it to the wall with paster.

Touch Panel Work as RF Remote (two match ways)

End user can choose the suitable match/delete ways. Two options are offered for selection:

Use the controller's Match key

Match:

Short press match key,
immediately press ON key of the touch panel.
The LED indicator fast flash a few times
means match is successful.

Delete:

Press and hold match key for 5s to delete all match.
The LED indicator fast flash a few times
means all matched remotes were deleted.

Use Power Restart

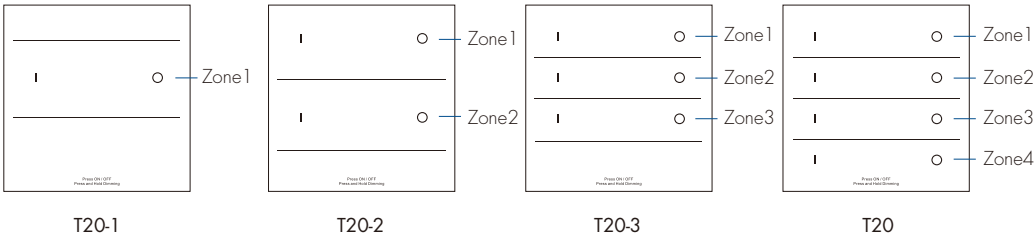
Match:

Switch off the power of the receiver,
then switch on power, repeat again.
Immediately short press ON key 3 times on the touch panel.
The light blinks 3 times means match is successful.

Delete:

Switch off the power of the receiver,
then switch on power, repeat again.
Immediately short press ON key 5 times on the touch panel.
The light blinks 5 times means all matched remotes were deleted.

Key Function



- I — ON key
- Short press: Turn on the light of each zone.
- Long press(1-6s): Dimming up when light is on.
- O — OFF key
- Short press: Turn off the light of each zone.
- Long press(1-6s): Dimming down when light is on.
- Long press(5s) : Turn on or turn off tone when light is off.

Safety Information

1. Read all instructions carefully before you begin this installation.
2. When installing battery, pay attention to the battery positive and negative polarity.
 - A long time without the remote control, remove the battery.
 - When remote distance becomes smaller and insensitive, replace the battery.
3. If no response from the receiver, please re-match the remote.
4. Gently handle remote, beware of falling.
5. For indoor and dry location use only.