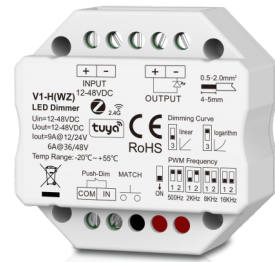


# V1-H(WZ)

## ZigBee & RF Dimming LED Controller

### Features

- Tuya smart APP cloud control, support on/off, brightness adjust, delay turn on/off light, timer run, scene edit and music play function.
- Philips HUE APP control by connect with Philips HUE bridge.
- Voice control, support for Amazon Alexa, Google Assistant, Tmall Genie and Xiaodu voice assistant.
- Match with RF 2.4G single zone or multiple zone dimming remote control.
- Each V1-H(WZ) controller can also work as ZigBee-RF converter, then use Tuya smart APP to control one or more RF LED controller or RF LED dimming driver synchronously.
- Connect with external push switch to achieve on/off and 0-100% dimming function.
- Push switch can also work as RF remote to control other controllers.
- 4096 levels 0-100% dimming smoothly without any flash.
- Output PWM frequency 500Hz, 2kHz, 8kHz or 16kHz selectable.
- Light on/off fade time 3s selectable.
- Easy to be placed in standard wall junction box behind a push switch.

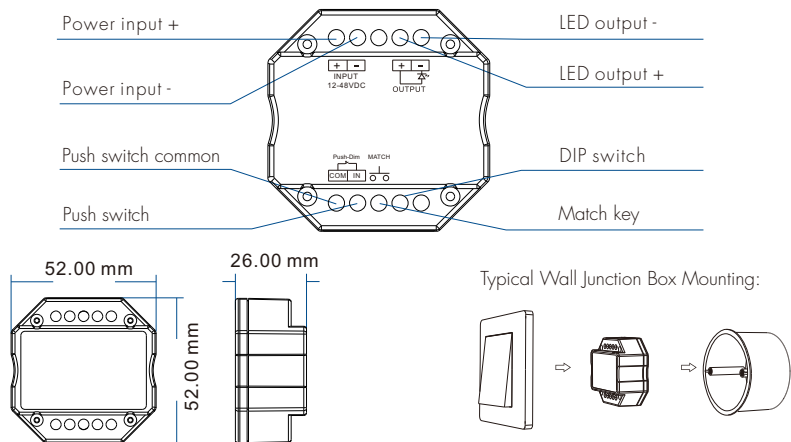


CE RoHS

### Technical Parameters

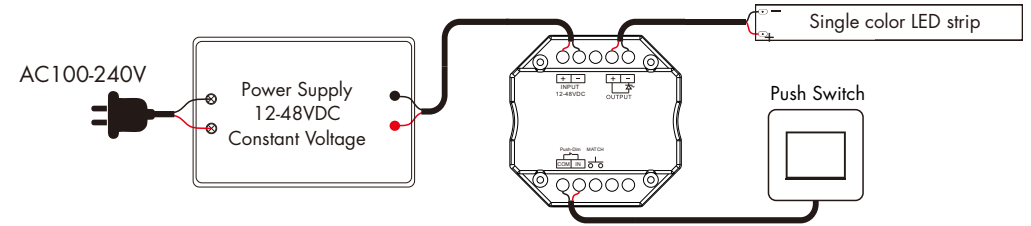
Input and Output		Dimming data		Safety and EMC	
Input voltage	12-48VDC	Input signal	ZigBee+RF 2.4GHz+Push Dim	EMC standard	EN IEC 55015/ EN IEC 61547
Output voltage	12-48VDC	Control distance	30m[Barrier-free space]		ETSI EN 301 489-1/-3
Output current	9A@12/24V 6A@36/48V	Dimming gray scale	4096 (2^12) levels	Safety standard	EN 61347-1/-2
Output power	108W@12V,216W@24V 216W@36V,288W@48V	Dimming range	0 -100%	Radio Equipment	ETSI EN 300 440
		Dimming curve	Logarithmic or linear	Certification	CE RoHS
Output type	Constant voltage	PWM frequency	500Hz/2KHz/8KHz/16KHz	Environment	
Warranty and Protection		Package		Operation temperature	Ta: -20℃ ~ +55℃
Warranty	5 years	Size	L60x W60 x H40mm	Case temperature (Max.)	Tc: +68℃
Protection	Reverse polarity, Short circuit, Over heat	Gross weight	0.049kg	IP rating	IP20

### Mechanical Structures and Installations



ZigBee

### Wiring Diagram



### Wire Preparation:

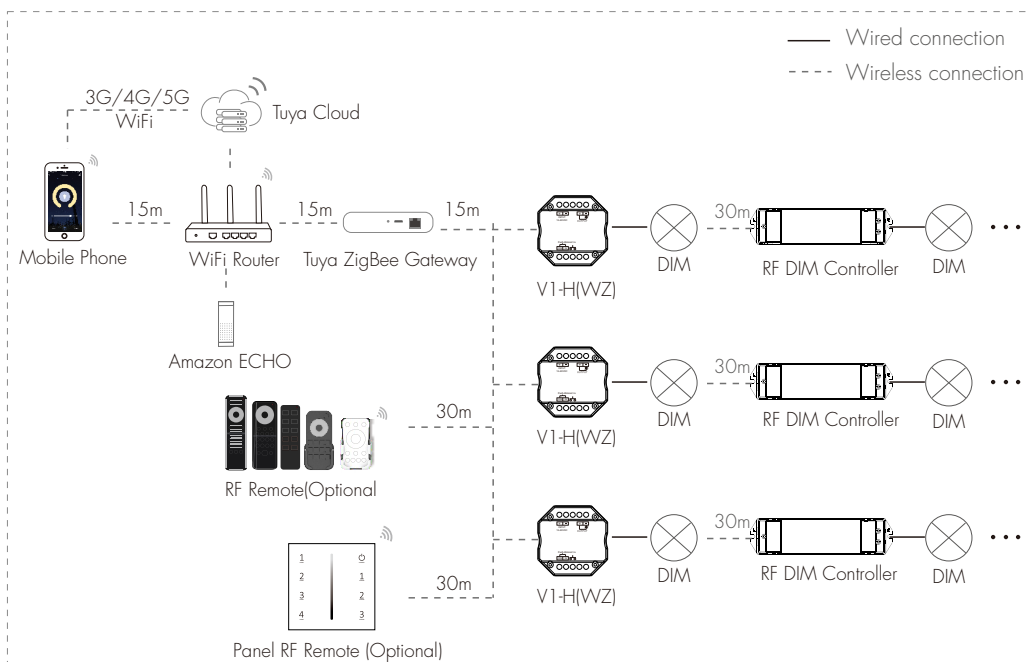
1. The wiring can be solid or stranded with a cross-sectional area of 0.5 to 2 mm<sup>2</sup>. Conventional 1mm<sup>2</sup> can withstand 10A output current.
2. When wiring is installed, the terminals must be tightened. If they are not tightened, the contact point resistance will be too high and the terminals will easily burn due to heat when used at full load for a long time.

0.5-2.0mm<sup>2</sup>  
6-7mm



**Note:** The output power of a constant voltage power supply should be at least 1.2 times that of the output load (LED strip), otherwise the full power output of the load can easily cause automatic flickering or shaking of the light.

### System Wiring



### Note:

1. The above distance is measured in spacious (no obstacle) environment, Please refer to the actual test distance before installation.
2. Users must use the Tuya ZigBee gateway to realize remote control and voice control.

## Tuya Smart APP Network Connection

### ● Download and open APP

Search for "Tuya Smart/Smart Life APP" in the app store.  
Register and login after installation.

### ● APP Pairing Network

Press and hold Match key for 2s, reset ZigBee network,

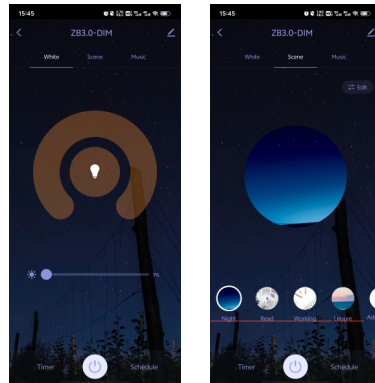
Network pairing, long press Match key for 5s, or push twice Match key fastly, clear previous network connection, enter Smart config mode, the LED indicator will fast flash.

Repeat power on and off for 5 consecutive times, also clear previous network connection, enter config mode, the output LED will flash 10 times.

In Tuya Smart/Smart Life APP find the ZigBee 3.0-DIM device to add, after the device is added successfully, the LED indicator stops blinking.

### ● APP Interface

touch the brightness bar to adjust the brightness;  
1-4 scenes can be edited for static or dynamic lighting mode.



## Match Remote Control (Optional)

End user can choose the suitable match/delete ways. Two options are offered for selection:

### Use the Match key

Match:

Short press match key of V1-H(WZ), immediately press on/off key (single zone remote) or zone key (multiple zone remote) on the remote. The LED indicator fast flash a few times means match is successful

Delete:

Press and hold match key of V1-H(WZ) for 10s, The LED indicator fast flash a few times means all matched remotes were deleted

### Use Power Restart

Match:

Switch off the power of V1-H(WZ), then switch on power, repeat again. Immediately short press on/off key (single zone remote) or zone key (multiple zone remote) 3 times on the remote. The light blinks 3 times means match is successful.

Delete:

Switch off the power of V1-H(WZ), then switch on power, repeat again. Immediately short press on/off key (single zone remote) or zone key (multiple zone remote) 5 times on the remote. The light blinks 5 times means all matched remotes were deleted

## V1-H(WZ) work as ZigBee-RF Converter to Match RF LED Controller or Dimming Driver

End user can choose the suitable match/delete ways. Two options are offered for selection:

### Use the controller's Match key

Match:

Short press match key of the controller, immediately press on/off key on the Tuya smart APP. The LED indicator fast flash a few times means match is successful

Delete:

Press and hold match key of the controller for 5s, The LED indicator fast flash a few times means match was deleted.

### Use Power Restart

Match:

Switch off the power of the controller, then switch on power, repeat again. Immediately short press on/off key 3 times on the Tuya smart APP. The light blinks 3 times means match is successful.

Delete:

Switch off the power of the controller, then switch on power, repeat again. Immediately short press on/off key 5 times on the Tuya smart APP. The light blinks 5 times means match was deleted

## Push Dim Function

● **Short press:** Turn on/off light.

● **Long press(1-6s):** Continuous adjustment brightness, dimming range 0-100%.

Note: When using a self-reset switch to synchronize control of multiple V1-H(WZ), please long press the self-reset switch for 10s to synchronize all dimmers to the highest brightness before controlling.

## Light on/off Fade Time

Long press match key 1.5s, restore factory default parameter, the light on/off time also restore to 0.5s.

Long press match key 20s, the light on/off time will be set to 3s, the indicator light blink 3 times.

## PWM Frequency Setting

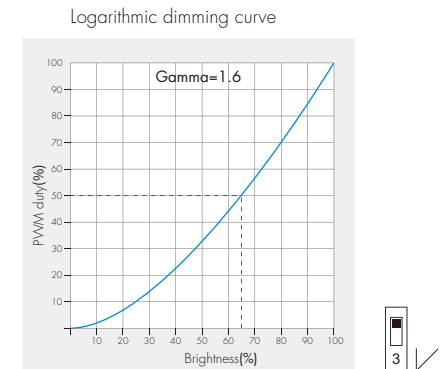
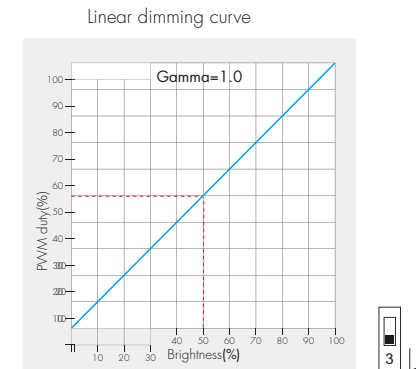
DIP switches 1 and 2 set the four output PWM frequencies: 500Hz, 2kHz, 8kHz, and 16kHz.

Higher PWM frequency, will cause lower output current, higher power noise, but more suitable for camera(No flickers for video).

	ON	1 2	1 2	1 2	1 2
PWM Frequency		500Hz	2KHz	8KHz	16KHz
Iout (12-24V)		9A	8A	7A	6A
Iout (36-48V)		6A	5A	4A	4A

## Dimming Curve

Set linear or logarithmic dimming via dip switch 3.



## Installation Precautions

1. The products shall not be stacked, the distance should be  $\geq 20\text{cm}$ , so as not to affect lifespan of the products due to poor heat dissipation.
2. The product shall not be installed close to the switching power supply with an interval of  $\geq 20\text{cm}$  to avoid radiation interference of the switching power supply.
3. The installation height shall be  $\geq 1\text{m}$  from the floor to avoid shortening the remote control distance due to too weak reception signal.
4. The products are not allowed to be close to or covered by metal objects, with an interval of  $\geq 20\text{cm}$  to avoid signal attenuation and shorten the remote distance.
5. Avoid installation at the corner of the wall or the corner of the beam, with an interval of  $\geq 20\text{cm}$  to avoid signal interference.