

# V2-PD

## One-Button RF CCT LED Controller

### Feature

- Use to control the color temperature of the LED strip.
- One button for on/off, color temperature and brightness adjustment.
- 4096 levels dimming smoothly without any flash.
- Operate with LED indicator.
- Match with 2.4G single zone or multiple zone temperature remote control optional.
- Used as RF remote control to output RF 2.4G signal, remote control of other RF temperature LED controllers or RF dimming drivers.



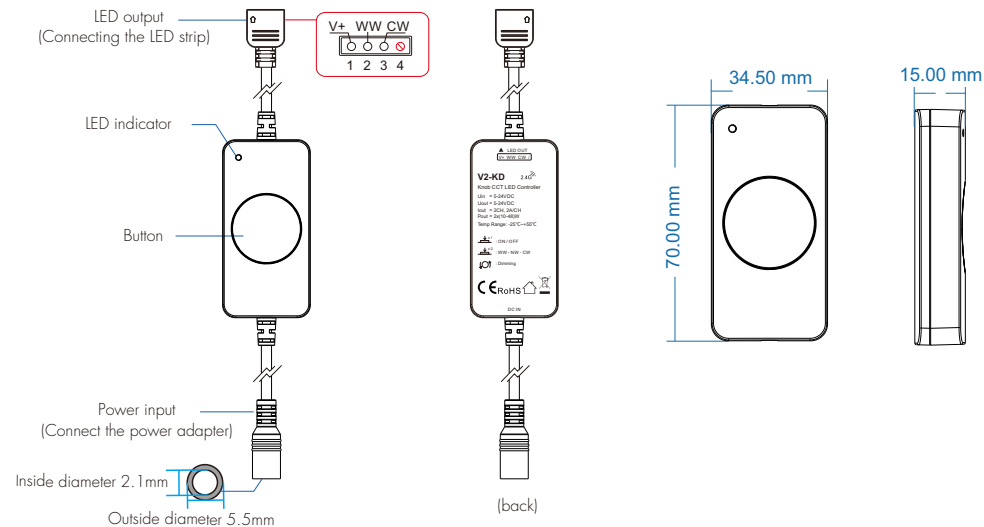
RF CCT

CE RoHS

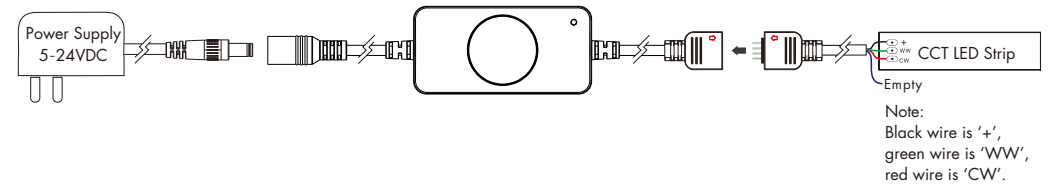
### Technical Parameters

Input and Output		Dimming data		Safety and EMC	
Input voltage	5-24VDC	Input signal	One-button + RF 2.4GHz	EMC standard	EN IEC 55015 EN IEC 61547 ETSI EN 301 489-1/-3
Output voltage	5-24VDC	Control distance	30m(Barrier-free space)	Safety standard	EN 61347-1/-2
Output current	2CH, 2A/CH	Dimming gray scale	4096 levers	Radio equipment	ETSI EN 300 440
Output power	2x(10-48)W	Dimming range	1 - 100%	Certification	CE RoHS
PWM Frequency	2000Hz	<b>Environment</b>			
Dimming curve	Linear	Operation temperature	Ta: -25 °C ~ +55 °C	<b>Package</b>	
<b>Warranty and Protection</b>		Case temperature (Max.)	Tc: +85 °C	Size	110x57x28mm(LxWxH)
Warranty	5 years	IP rating	IP20	Grossweight	0.048kg
Protection	Reverse polarity, Over-heat				

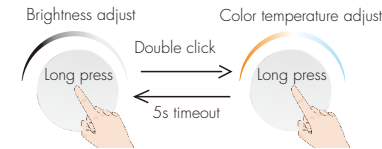
### Mechanical Structures and Installations



### Wiring Diagram



### Button Function



**Short press:** Turn on or off light.

**Double click:** Switch three color temperature levels (Warm white - Neutral white - Cool white) in sequence, and at the same time enter the state of long press to adjust color temperature.

After 5s of no operation, it will automatically return to the state of long press to adjust brightness.

**Long press(1-6s):** Adjust the brightness or color temperature, long press again after each release, adjust in the opposite direction. Adjusts brightness by default.

### V2-PD Match RF Remote Controller (Use Power Restart)

**Match:**

Switch off the power, then switch on power, repeat again.  
Immediately short press on/off key (single zone remote) or zone key (multiple zone remote) 3 times on the remote.  
The light blinks 3 times means match is successful.

**Delete:**

Switch off the power, then switch on power, repeat again.  
Immediately short press on/off key (single zone remote) or zone key (multiple zone remote) 5 times on the remote.  
The light blinks 5 times means all matched remotes were deleted.

### V2-PD Used As RF Remote Controller

The V2-PD can be matched with one or more RF CCT LED controllers/RF dimming drivers to remotely control other fixtures via one-button operation.

For example, two V2-PD controllers match with each other for synchronized control.

End user can choose the suitable match/delete ways.

#### Use the controller's Match key

**Match:**

Short press the controller/power supply's match key, immediately press the button.  
The LED indicator fast flash a few times means match is successful.

**Delete:**

Press and hold the controller/power supply's match key 5s, The LED indicator fast flash a few times means all matched remotes were deleted.

#### Use Power Restart

**Match:**

Switch off the power of the controller, then switch on power, repeat again.  
Immediately short press the button 3 times.  
The light blinks 3 times means match is successful.

**Delete:**

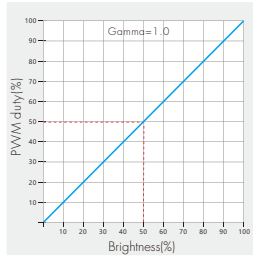
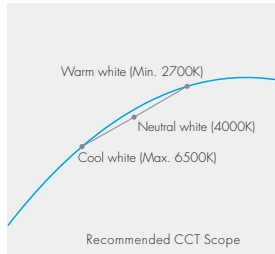
Switch off the power of the controller, then switch on power, repeat again.  
Immediately short press the button 5 times.  
The light blinks 5 times means all matched remotes were deleted.

## Dual Color Control

WW = Warm white LED    CW = Cool white LED

Each channel can supply up to 48W(@ 24V) and white balance can be controlled as such:

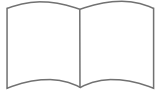
Color temperature	Cool white	Neutral white	Warm white
Power distribution	WW=0W, CW=48W	WW=24W, CW=24W	WW=48W, CW=0W



## Packing List



LED Controller  
1 pcs



User Manual  
1 pcs



Extension Cable  
(12.5cm)  
1 pcs